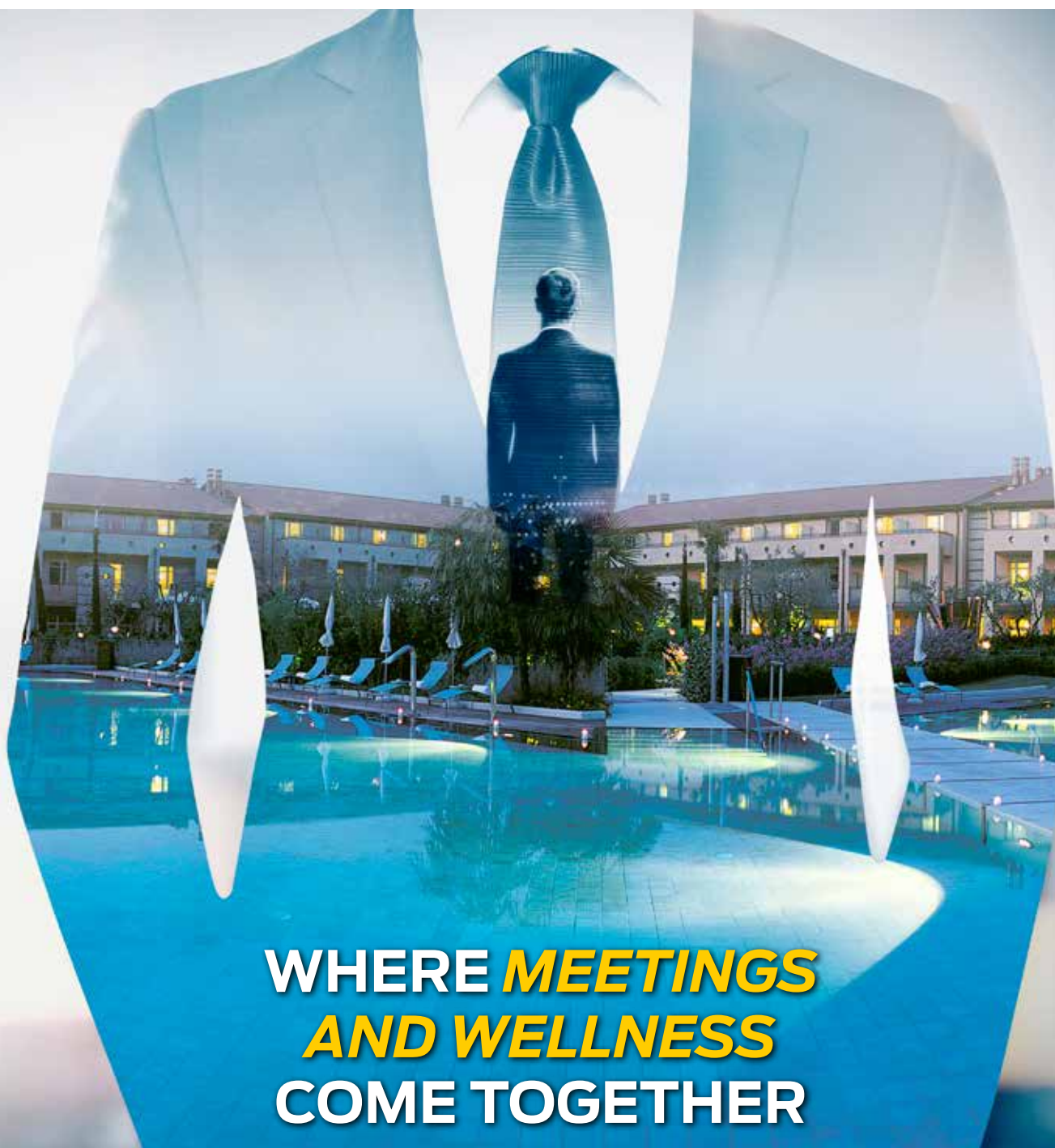




HOTEL CÆSIUS

THERMÆ & SPA RESORT

★★★★S



**WHERE *MEETINGS*
AND WELLNESS
COME TOGETHER**

HOTEL CÆSIUS THERMÆ & SPA RESORT • BARDOLINO - LAKE GARDA (Verona, Italy)

Tel. +39 045 7219100 • salescaesius@europlan.it • www.hotelcaesiussterme.com



AUGUSTUS



- IL GIARDINO DEGLI ULIVI
AMACHE
HÄNGEMÄTTEN/HAMMOCKS
- CASA PRINCIPALE CAESIUS
HAUPTHAUS CAESIUS
MAIN BUILDING CAESIUS
- VIALETTI PEDONALI
FUSSWEGE/FOOTWAYS
- AUGUSTUS
CAMERE 501 - 522
ROOMS/ZIMMER
CAMERE 601 - 622
ROOMS/ZIMMER
- AUGUSTUS
SUITE 401 - 424
- RISTORANTE/TERRAZZA
AUGUSTUS
- PISCINE ESTERNE
SWIMMING POOLS
- TERRAZZA RISTORANTE "LE VELE"
TERRAZZA BAR
BAR - POOLBAR "GAZEBO"
- VIA PEDONALE
FUSSWEG/FOOTWAY



**PIANO INTERRATO
UNTERGESCHOSS - BASEMENT**



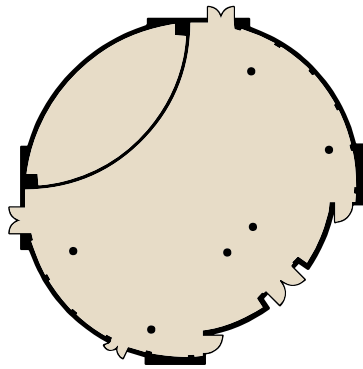
- CORRIDOIO
KORRIDOR/HALLWAY
- CONGRESS CENTER
- L'ANGOLO DEI PICCOLI
SPIELZIMMER FÜR UNSERE KLEINSTEEN
KIDDOY'S PLAYROOM
- PISCINA COPERTA
INDOOR POOL HALLENBAD
- WELLNESS E PRIVATE SPA
- THERMÆ - BEAUTY - AYURVEDA
- FITNESS
- SOLARIUM

Tel. +39 045 7219746
 congresscaesius@europlan.it
 www.caesiuscongresscenter.com





Sala Gardenia - U-shape



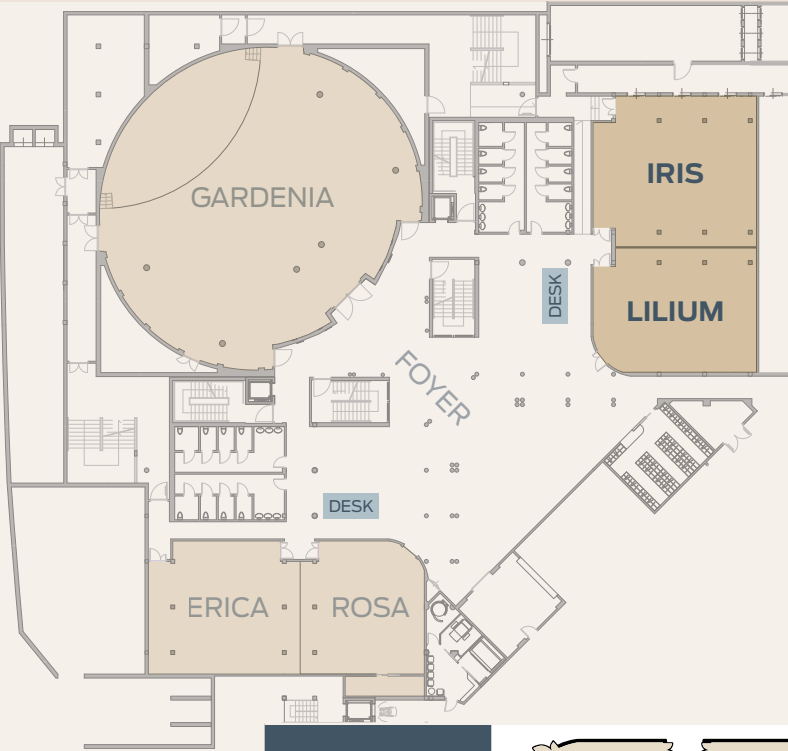
Surface area	Floor	Classroom style	Round table	U-shape	Boardroom conference table set
435 sqm	from 20 to 300 pax	from 20 to 150 pax	from 80 to 200 pax	from 10 to 55 pax	up to 50 pax

Room height 4,10 m - Door width 1,20/2,40 m - Door height 2,10 m.

Technical equipment:

Video projector (6700 ANSI lumen), microphone audio system, flip chart, internet connection/WiFi, direct dial phone, laser pointer, drop screen, 3-step podium, total height of 45 cm.





Sala Lilium - U-shape

	Surface area	Floor	Classroom style	Round table	U-shape	Boardroom conference table set
IRIS + LILIAM	250 sqm	from 20 to 90 pax	from 20 to 36 pax	from 20 to 80 pax	from 10 to 28 pax	up to 20 pax
IRIS	145 sqm	from 20 to 70 pax	from 20 to 36 pax	from 20 to 40 pax	from 10 to 28 pax	up to 20 pax
LILIAM	105 sqm	from 20 to 60 pax	from 20 to 36 pax	from 20 to 40 pax	from 10 to 28 pax	up to 20 pax
VIOLA	55 sqm	up to 30 pax	—	—	—	up to 20 pax

Room height 3,40 m - Door width 1,20/1,55 m - Door height 2,10 m.

Technical equipment:

Video projector (4500 ANSI lumen), microphone audio system, flip chart, internet connection/WiFi, direct dial phone, projection wall.



Sala Erica - Classroom style

		Surface area	Floor	Classroom style	Round table	U-shape	Boardroom conference table set
ERICA + ROSA		208 sqm	from 20 to 90 pax	from 20 to 36 pax	from 20 to 80 pax	from 10 to 28 pax	up to 20 pax
ERICA		104 sqm	from 20 to 70 pax	from 20 to 36 pax	from 20 to 40 pax	from 10 to 28 pax	up to 20 pax
ROSA		104 sqm	from 20 to 60 pax	from 20 to 36 pax	from 20 to 40 pax	from 10 to 28 pax	up to 20 pax
MALVA		50 sqm	up to 30 pax	—	—	—	up to 20 pax

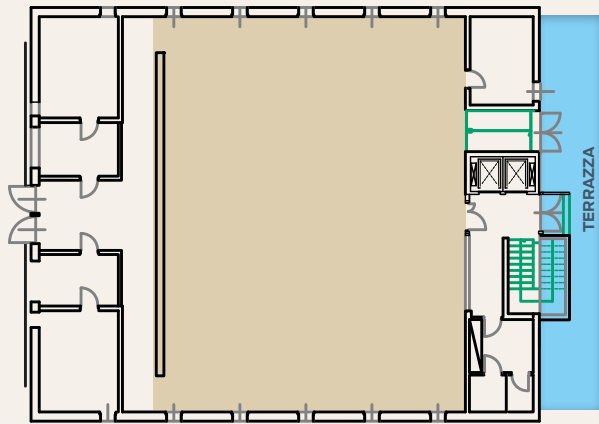
Room height 3,40 m - Door width 1,20/1,55 m - Door height 2,10 m.

Technical equipment:

Video projector (4500 ANSI lumen), microphone audio system, flip chart, internet connection/WiFi, direct dial phone, projection wall.



La fabbrica dell'acqua



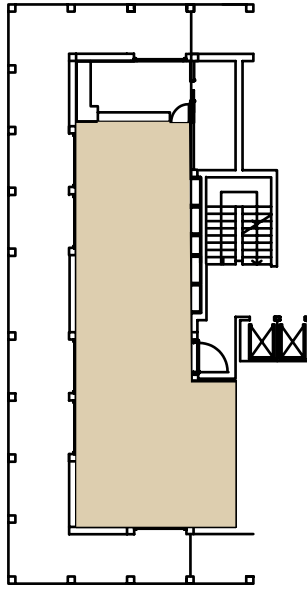
Area	Theatre style	Classroom style	Banquet style
280 sqm	150 + 8 pax	96 + 8 pax	180 pax

Room length = 14,50m · Room width = 19,33m

Equipment:

3 fixed projectors with 6,700 lumens - usable also individually at the same moment; 3 retractable screens of 290 x 210 cm; full HD camera for event recording; audio system with speakers and amplifiers; sound system microphone; internet streaming; flipchart; WiFi; telephone line; laser pointers; lectern speaker; platform area speakers





Surface area	Floor	Classroom style	Round table	U-shape	Boardroom conference table set
126 sqm	from 20 to 50 pax	from 20 to 30 pax	nd	from 10 to 20 pax	up to 20 pax

Room height 2,70 m - Door width 0,90 m - Door height 2,10 m.

Technical equipment:

Mobile video projector (4500 ANSI lumen), microphone audio system, flip chart, internet connection/WiFi, direct dial phone, projection wall.



Benacus Restaurant

Le Vele Restaurant



Benacus Restaurant



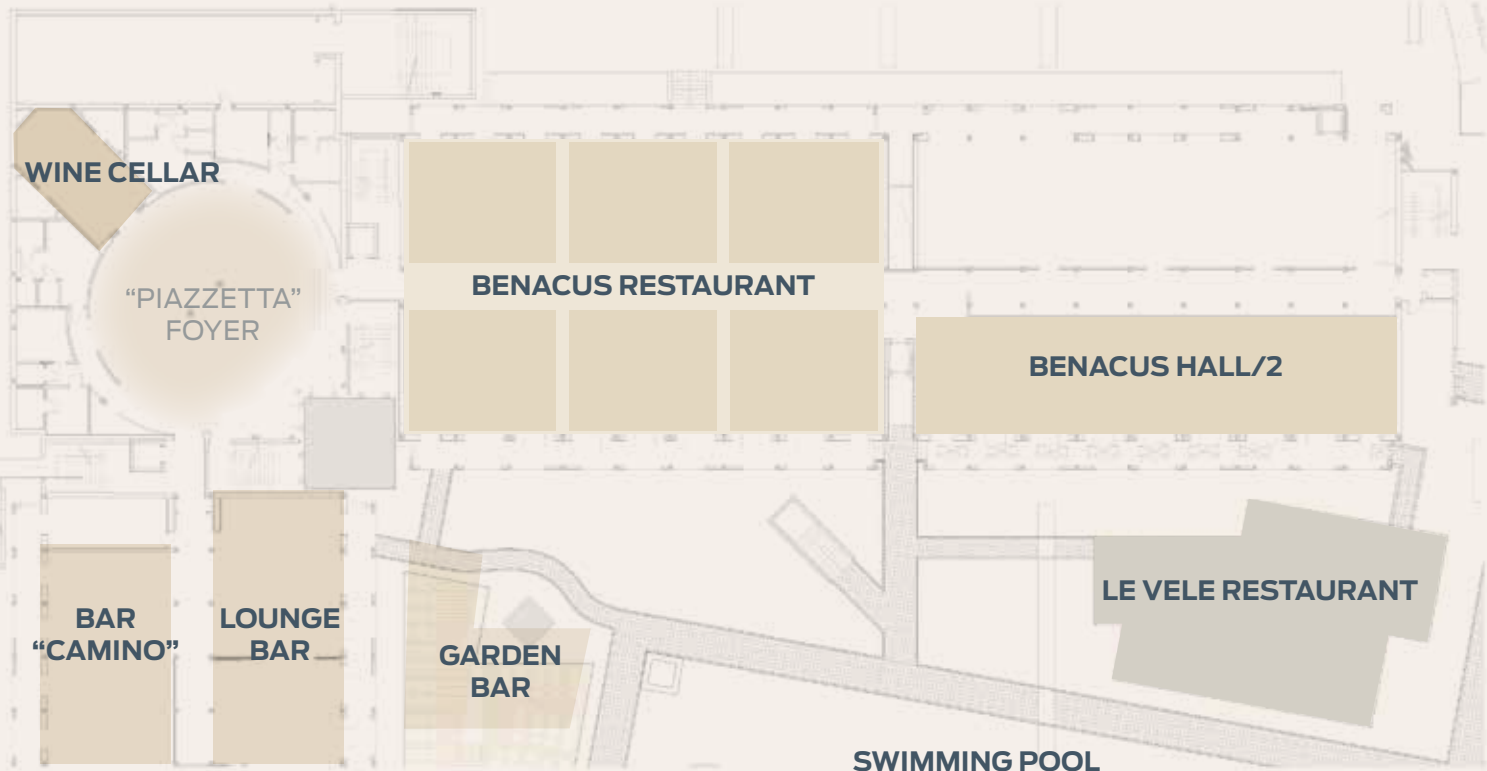
Le Vele Restaurant



Breakfast Buffet



Breakfast Le Vele



Caesius building - ground floor



San Nicolò sailing vessel

Anchors aweigh - with our incentive offer



Experience the fascinating historic ketch - the last to operate on Lake Garda. The sailing vessel features stereo equipment, bar and a toilet. Aperitifs, snacks or light lunch are served on board. Guest who wish to, can jump into the pure lake water.

Period: May - October

Maximum capacity: 30 pax

Length: 16,80 m

Width: 4,70 m

Depth: 1,60 m

(In case of bad weather, the itinerary may changed or the tour may be cancelled)

